

NW 1/4 OF NW 1/4  
SECTION 23, T5N, R2W, S.L.B. & M.

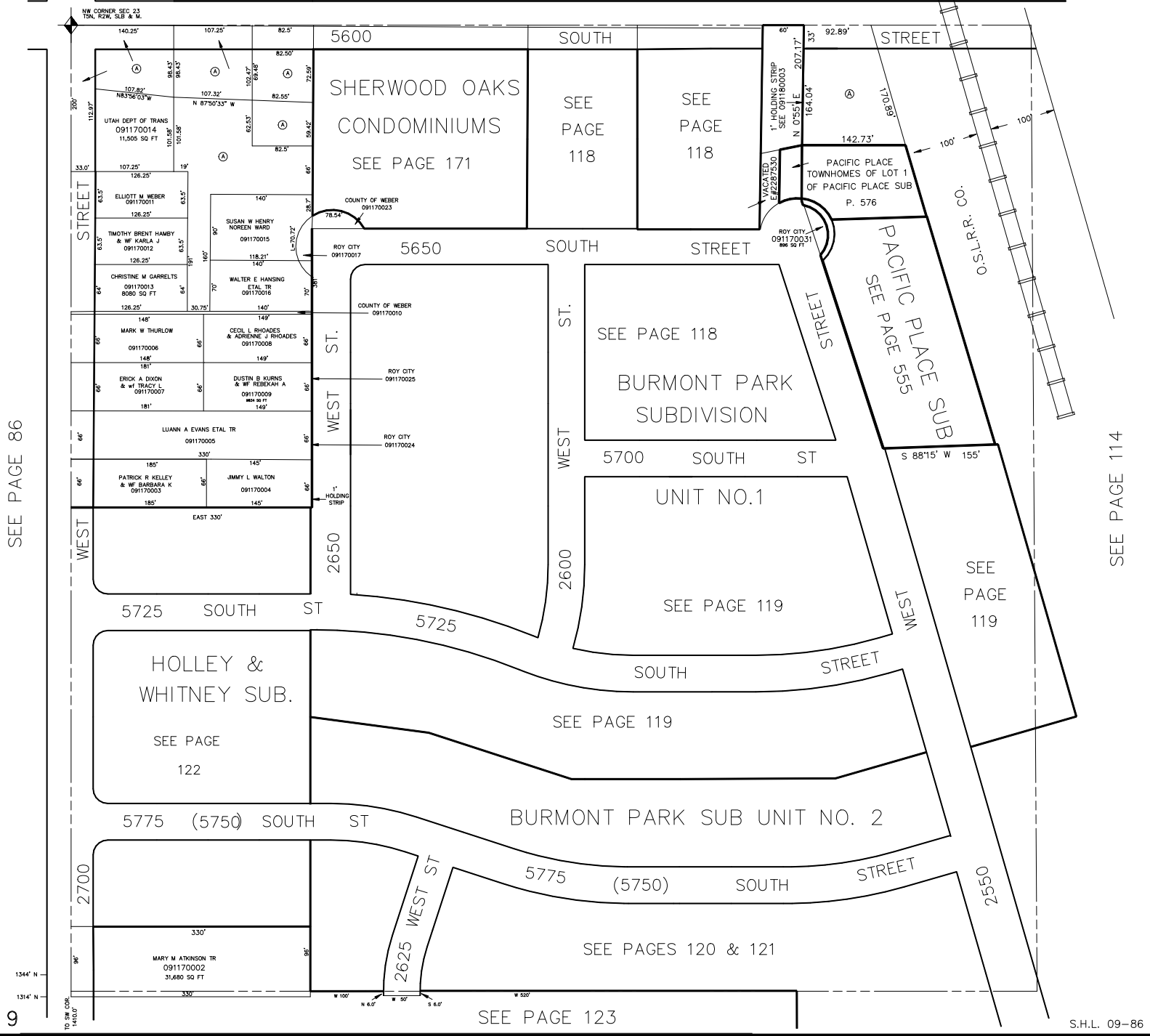
TAXING UNIT: 41

ROY CITY

SCALE 1" TO 100'

SEE PAGE 54

UTAH DEPT OF TRANS  
091170029  
3.33 AC±



SEE PAGE 86

SEE PAGE 114

9

SEE PAGE 123